



THE *Measure* OF Our Commitment

FIFTEEN YEARS IN THE FIGHT AGAINST CANCER



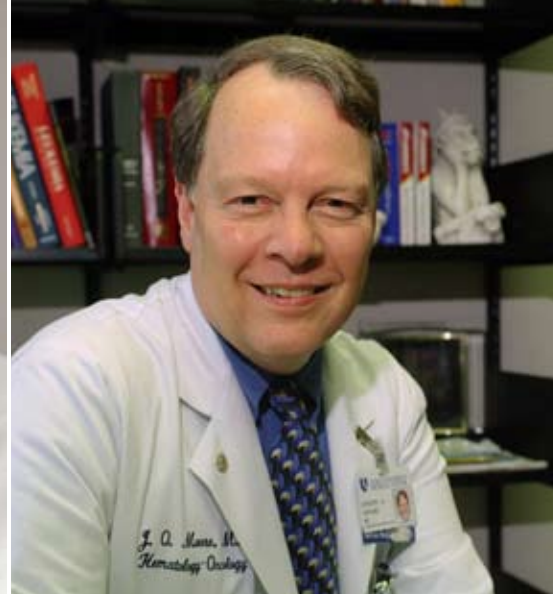
*“Don’t give up...
DON’T EVER GIVE UP!”*[®]

It has been 15 years since Jim Valvano organized his team to wage the war on cancer and announced the formation of The V Foundation for Cancer Research at the inaugural ESPY awards. Jim’s family and friends are proud of the organization’s tremendous success in raising over \$70 million and awarding more than 300 cancer research grants to 88 institutions in 38 states and the District of Columbia.

The Measure of Our Commitment is a retrospective of our 15 years in the fight against cancer of all types. With great pride, we profile a few of the many outstanding researchers that The V Foundation has funded, along with a chronicle of their extraordinary achievements. With guidance from our Scientific Advisory Board, we invested wisely in promising scientists to give them the

opportunity for independent research at an early stage in their careers. Their stories demonstrate how V Foundation seed money helped them launch their research, increase their ability to attract significant additional funding and produce results that are now moving from the lab into clinical trials.

Our guiding principle in the fight against cancer is that it must stay personal. We are extremely grateful to our Board of Directors, Scientific Advisory Board and the researchers and medical professionals who work tirelessly to win the battle against cancer. We thank all our individual contributors for their passion and friendship. Without their unwavering commitment, we could not have made this progress.



Finding a SOLUTION

I first met Coach Jim Valvano in the spring of 1992 after he had returned from preparation for the Barcelona Olympics. He had developed back pain; X-rays revealed bone lesions and subsequently a biopsy revealed cancer.

From our first meeting, Jim was frustrated that there was no standard curative treatment for his disease. “Why not” led to discussions of ongoing research, treatment plans and discussions of the funds required to support both research and the researchers. He was not only frustrated but was angry at a system which allowed young investigators at the very threshold of productive careers, and with proven research records and abilities, to leave research for lack of support. There seemed no specific remedy to reverse this negative dynamic.

The inadequacy of funding was discussed frequently with Jim by me personally during clinic visits and hospital stays. Others involved medically were Dr. Robert Fine, now at Columbian Presbyterian in New York City, and Dr. Robert Bast, then the Director of Duke Comprehensive Cancer Center and now the Head of Translational Research at M.D. Anderson Cancer Center.

From these discussions, Jim developed the idea of raising money for cancer research and used his own plight, his celebrity status and his visibility to facilitate this process. With leaders from ESPN, the Foundation was born in concept in his hospital room and was announced formally at the ESPY Awards Ceremony in 1993. Jim himself asked the original board members

to participate. This board brought expertise from medicine, from sports, from the media and from business in a common effort to raise money, increase awareness and fund research.

Following Jim’s death, The V Foundation for Cancer Research was formed in early meetings. These were intensely personal and emotional but with a keen sense of responsibility to Jim, to other cancer patients and to all of those family members and others affected by cancer. In keeping with Jim’s wishes, initial and subsequent grants were awarded to young investigators with proven initial research abilities and who literally were at crossroads in their careers. On many occasions, funding rescued researchers and kept them from leaving research.

Subsequent expansion of these grant proposals to National Cancer Institute designated cancer centers increased the awareness of The V Foundation in the research community and to the public, and also assured the quality of grant proposals. This quality has increased steadily over the years. More recently, grants have expanded into translational research to

bring scientific discoveries to the bedside more rapidly and efficiently, while other grants are focused on the people and in communities where funds have been raised. Overall, the expansion has been dramatic and Jim would be intensely proud.

Article written by:

Joe O. Moore, M.D.

*Professor, Hematology and Oncology
Duke Comprehensive Cancer Center*

“We need money for research. It may not save my life. It may save my children’s lives. It may save someone you love.”

Jim Valvano, 1993 ESPY Awards acceptance speech

Bob Bast (left), Joe Moore (right)

Doctors Bob Bast and Joe Moore, both founding members of The V Foundation Board of Directors and the Scientific Advisory Board, continue to provide valuable guidance and support.



V Scholar PROJECT PROFILES

ABOUT THIS GRANT

The V Scholar Program is designed to identify, retain and further the careers of talented young investigators by giving them opportunity for independent research at an earlier stage of their careers. Scientists are given funds to establish their laboratories and gain the competitive edge necessary to earn additional funding from other sources. The recipients of these two-year, \$100,000 grants are V Scholars.

Since 1994, The V Foundation has awarded 172 grants to brilliant young scientists, totaling \$17.2 million. Of those V Scholars, 93 percent have received additional funding and are still working in independent labs. An additional five percent are currently in related research. Working in the nation's major research institutions and cancer centers, these scientists continue to receive more funding, leading them closer to breakthrough discoveries.

Gerold Bepler

Gerold Bepler, M.D., Ph.D., received the very first V Scholar award in 1994. This support, early on in his career when he was a newly appointed Assistant Professor of Medicine at Duke University Medical Center, was instrumental in his research into molecular changes that affected lung cancer's progression and how genetic intervention could improve the low cure rate in patients.

The key discovery, supported by The V Foundation, has been a genetic alteration seen in a region on chromosome segment 11p15.5. Alterations were found in approximately 60 percent of primary lung cancers. His laboratory then embarked on mapping and sequencing the region to identify genes that might impact lung cancer biology. The RRM1 gene was a leading candidate, and his laboratory discovered that it was involved in tumor

invasion and metastasis formation. In addition, he described that RRM1 is the crucial molecular target for gemcitabine, a cytotoxic agent used in the treatment of patients with lung cancer and other malignancies.

This prompted novel clinical trials that utilized RRM1 expression for treatment selection in patients with advanced lung cancer. Initial results demonstrated that this treatment selection strategy resulted in improved tumor response and patient survival. He is now conducting a phase III multi-institutional, international trial with the goal to demonstrate that personalized gene-directed therapy can impact patients' survival and quality of life.

"The Foundation has supported our patient and family-centered efforts to reach out to those affected by lung cancer, policy makers and the population at large to provide education on the purpose, impact and necessity for research and clinical trials with the goal to develop new and effective treatment and prevention strategies," Bepler said. "I am sure that the combined efforts of basic researchers, clinicians and patients and their families will ultimately lead to the eradication of this disease."

Collaborations also are key, and one such example is a new partnership with Genzyme Corporation to develop a diagnostic test for patients with non-small cell lung cancer. This test showing the expression level of RRM1 and another protein, ERCC1, should help physicians choose the best first therapy for their patients.

These and many other investigations comprise Moffitt Cancer Center's new Comprehensive Lung Cancer Research Center, which Bepler is proud to lead. New generations of trials that incorporate molecular and cellular biology, genetics and immunology are exploring ways to utilize novel scientific discoveries to improve outcomes for lung cancer patients.

"I am grateful to The V Foundation and how it set in motion extensive funding, especially an esteemed NCI Specialized Program of Research Excellence (SPORE) grant, the first one awarded to Moffitt," Bepler said.

Dr. Bepler has established himself as an international leader in lung cancer research and has received more than \$20 million in funding for his work. The 1994 V Scholar grant funded his early research that led to a key discovery into molecular changes that affected lung cancer's progression. He is now conducting a phase III multi-institutional, international clinical trial.

Gerold Bepler, M.D., Ph.D. (above)

Professor of Medicine and Oncology; Program Leader & Division Chief, Thoracic Oncology Program; Director, Comprehensive Lung Cancer Research Center at H. Lee Moffitt Cancer Center & Research Institute, Tampa, Florida

Paul Dent

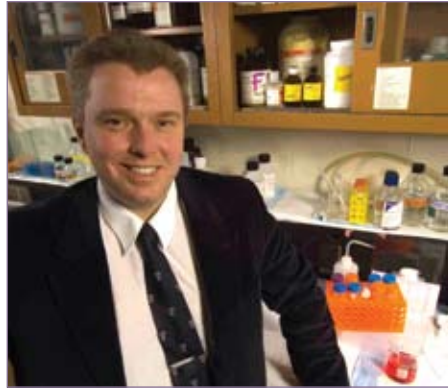
Paul Dent, PhD, who holds the Universal Corporation Professorship in Cancer Cell Signaling at the Virginia Commonwealth University Massey Cancer Center, received two years of funding as a V Scholar in 1997.

"As a young investigator, it meant so much to me," said Dent. "The V Foundation was the first organization outside of my university that showed belief in my ability."

That funding enabled Dent to quickly build his laboratory, and served as a springboard to securing federal grants and to expand his work.

His research explores the mechanisms of how the newest and most novel cancer therapeutic drugs can be combined to kill even the most resistant and lethal cancer cells, and how to increase the ability of radiation to kill cancer cells. These discoveries are being applied to diverse cancers, such as breast, liver, kidney, pancreatic, brain and prostate.

"Without the support of The V Foundation, it's unlikely I would have achieved so much so fast," said Dent, who has published numerous scientific papers and expanded his lab several-fold. "Even after my initial funding ran out, I continue to acknowledge The V Foundation



Paul Dent, PhD
Universal Corporation Professorship in
Cancer Cell Signaling
VCU Massey Cancer Center

in my publications," he said. "It's my way of extending my gratitude while also raising awareness of the Foundation."

In 2007, Dent was awarded V Foundation funding for translational research as part of a team composed of Steven Grant, MD, John Roberts, MD and Mohamed Rahmani, PhD. Their goal is to re-establish a leukemia cell death program. Their strategy is based on their recent publications indicating that the anti-cancer drug sorafenib decreases expression of the survival

protein Mcl-1, and dramatically increases the anti-leukemic activity of a class of agents known as Bcl-2 antagonists.

"Over 10 years, I have received much nurturing and encouragement from V Foundation staff, committee members and the Valvano family. I've also had valuable interaction opportunities with other scholars and investigators," said Dent.

"Fighting cancer nationwide is a bit like fielding a highly competitive sports franchise. You have to invest in promising talent in order to strengthen the roster and improve future outcomes. The V Foundation provides invaluable support on the frontlines of defeating cancer."

~ Paul Dent, Ph.D.



Powel Brown, M.D., Ph.D.
Associate Director of Cancer Prevention
Dan L. Duncan Cancer Center at Baylor
College of Medicine

Powel Brown

Dr. Powel Brown was one of the first V Scholars, receiving support from The V Foundation in 1996 as an Assistant Professor. He is now the Dan L. Duncan Professor of Medicine and Molecular and Cellular Biology at Baylor College of Medicine and a practicing breast medical oncologist. He recognizes that the initial support from The V Foundation was critical in his development as a physician-scientist.

Dr. Brown directs an R01 funded laboratory studying breast carcinogenesis and a clinical research group focused on conducting breast cancer prevention clinical trials. The R01 mechanism allows an investigator to define the scientific focus or objective of the research based on a particular area of interest and competence. He has identified several critical signal transduction molecules required for the development of ER-negative breast cancer, and has brought several cancer prevention drugs to clinical trial.

Dr. Brown's V Scholar grant, entitled "Inhibition of Breast Cancer Cell Growth and Invasion Using AP-1 Transcription Factor Inhibitors," was his first research grant. In this project, Dr. Brown investigated the role of this growth factor-activated transcription factor in regulating breast cancer cell growth and invasion. He demonstrated that the AP-1 transcription factor is necessary for cancer cell proliferation, motility and invasion, and also showed





that inhibitors of this transcription factor block breast cancer growth and invasion and prevent oncogene-induced breast cell transformation.

This grant provided flexible funding to support his initial research studying the AP-1 transcription factor in breast cancer and enabled him to obtain preliminary results for several larger grants. Results from these studies allowed him to quickly obtain other grants, including an Investigator Award from the Department of Defense entitled "Prevention of Breast Cell Transformation by Blockade Of The AP-1 Transcription Factor," a Cancer Center Grant

entitled "Blockade of the AP-1 Transcription Factor for the Prevention of ER-positive and ER-negative Breast Cancer," and an NIH R01 grant entitled "Targeting AP-1/ER Crosstalk for the Prevention of Breast Cancer." This V Scholar grant also allowed Dr. Brown to develop other areas of research including studies of retinoids and signal transduction inhibitors for the prevention of breast cancer. Since receiving The V Foundation grant, Dr. Brown has obtained two other NCI-funded R01 grants and a National Cancer Institute funded program project grant.

The initial \$100,000 investment by The V Foundation into Dr. Brown's breast cancer research project has been leveraged into over \$12 million in research funds within the last 10 years.

Ramin Shiekhhattar

As a 1999 recipient of the V Scholar award, Dr. Shiekhhattar focused specifically on the multiprotein-complex BRCA2, which acts as a tumor suppressor that, when mutated, can lead to breast and ovarian cancer. The link between the BRCA1 and BRCA2 genes and hereditary breast cancer was first identified in the early 1990s, but the biological function of these has remained elusive. Dr. Shiekhhattar's lab was able to demonstrate how these two proteins combine with others to form a complex and define the role of the complex in regulating DNA repair. The researchers also discovered two new proteins that are part of this complex and linked one of them, BRCC36, to sporadic breast cancers.

This is important because BRCA1 and BRCA2 are normally tumor suppressor genes that, when mutated, can lead to cancer, but only account for about five percent of breast cancers overall. However, the BRCC36 gene and the other genes that factor into the creation of the BRCC complex are good candidates for additional breast cancer susceptibility genes.



Ramin Shiekhhattar, Ph.D.

Professor, Gene Expression and Regulation Program and Molecular and Cellular Oncogenesis Program
The Wistar Institute (Philadelphia, PA)

"When I was a young investigator it was vitally important to receive external funding like that from The V Foundation. It enabled me to put greater focus on my science leading to new biological insights and broader support for my work."

~ Ramin Shiekhhattar, Ph.D.

Additional work in the Shiekhhattar lab has led to an increase in the understanding of the role of micro RNAs, tiny bits of short-lived genetic material. These are attracting enormous interest from biomedical researchers since their discovery only a few years ago, as they are remarkably powerful molecules that play a pivotal role in gene silencing, one of the body's main strategies for regulating its genome. In two separate studies published in *Nature*,

Dr. Shiekhhattar identified a two-protein complex, called the microprocessor complex, which controls the earliest steps in the creation of miRNAs, then identified a three-protein complex that picks up this process and carries it through to the maturation of the finished miRNAs. The research links the process of creating miRNAs with aspects of tumor suppression.



Translational Grant PROJECT PROFILES

ABOUT THIS GRANT

The V Foundation's Translational Grant Program includes aspects of both translational and clinical research. Translational research is the process of translating basic scientific discoveries into clinical applications, such as new diagnostics and treatments. Researchers seek to apply basic knowledge of cancer and bring the benefits of their findings to patients more quickly and efficiently; information collected from the patient circles back to the laboratory to fuel additional discoveries.

Wadih Arap, M.D., Ph.D. and Renata Pasqualini, Ph.D. received one of the first translational grants. At the program's inception, grants were awarded for \$300,000 and matched by the institution. Since 2006, The V Foundation increased its investment level to \$600,000 three-year commitments, and has invested in 28 grants totaling \$12 million.

Wadih Arap, M.D., Ph.D. (above)

Stringer Professor of Medicine and Cancer Biology University of Texas M.D. Anderson Cancer Center

Renata Pasqualini, Ph.D. (above)

Buchanan and Seeger Professor of Medicine and Cancer Biology University of Texas M.D. Anderson Cancer Center

Arap and Pasqualini

Our group has originally developed two broad ligand-directed targeting technology platforms to uncover and exploit functional protein interactions in the context of human disease: combinatorial selection of peptide libraries in patients and hybridoma-free generation of monoclonal antibodies.

Essentially, by using these two complementary biotechnologies over the past decade, we have been probing the molecular diversity (for example, of the vascular and lymphatic endothelium or of the humoral immune system) to find unique cell surface addresses—endothelial and otherwise—for delivery to selective cell types or cell populations, vasculature of tissues and/or organ systems. There are many potential, as yet unrecognized, ligand-receptor interactions that may lead to applications such as targeted drug delivery, vascular-mediated

tissue repair. Such sets of ligand-receptor interactions can encompass applications in different organ-specific vascular beds in health and diseased conditions. The aggregate data we have generated thus far indicates that a new targeted pharmacology, and its ramifications, is now unequivocally at hand. Future directions for our program include, but are not limited to, advancement and translational applications of vascular and lymphatic targeting, molecular-genetic imaging and the conception of toolkits of scientific and medical value.

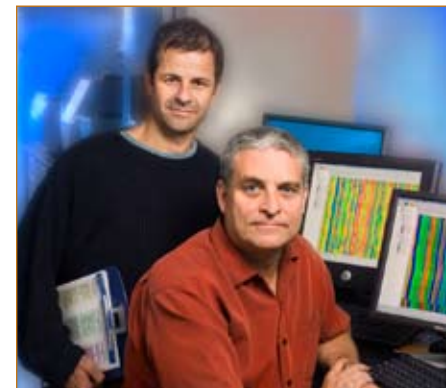
"The V Foundation provided invaluable support for a high-risk, high-reward project with substantially important prospects for the development of ligand-directed vascular targeted therapies and imaging agents," says Pasqualini.

Leone and Ostrowski

Since receiving The V Foundation translational grant in 2001, Gustavo Leone, Ph.D., and Michael Ostrowski, Ph.D., have been conducting a genetic analysis of the role of the microenvironment in breast tumor progression. They are learning more about how cancer starts, pushes its way through neighboring tissues and spreads to other parts of the body. This vital information could lead to more effective ways to diagnose, control and prevent cancer. And, it might even help explain why people with the same cancer can respond differently to treatment. The researchers are focusing on the tumor's edge, where cancer cells press cheek-to-cheek against neighboring normal cells, or what are usually assumed to be normal cells. Scientists call this zone the tumor microenvironment.

"The 'Human Vascular Map' continues to evolve successfully, and three novel drug candidates are making their way to the FDA as clinical trials based on our technology are expected to begin in the near future."

~ Renata Pasqualini, Ph.D.



Gustavo Leone, Ph.D. (left) & Michael Ostrowski, Ph.D. (right)

Ohio State University Comprehensive Cancer Center and the James Cancer Hospital and Solove Research Institute at Ohio State University

By using the powerful combination of genetic analysis of human breast cancer patient tumor samples and uniquely designed mouse models, these investigators have been able to demonstrate a key role for the tumor suppressor PTEN in the breast tumor microenvironment. The team has been the first to successfully model the human tumor microenvironment in mouse models of breast cancer. These mouse models will be useful for defining microenvironment biomarkers for improved diagnosis and prognosis of breast cancer, and also for the development of therapies specifically aimed at disrupting the communication between the tumor and its microenvironment.

Funding from The V Foundation grant has led to additional grant funding by the group, including an NCI-funded program project grant, a DOD-Breast cancer program IDEA award, an award from the Komen Breast Cancer Foundation, as well as both Pre-Doctoral and Post-Doctoral training awards from the DOD Breast Cancer Program to support trainees in the group.

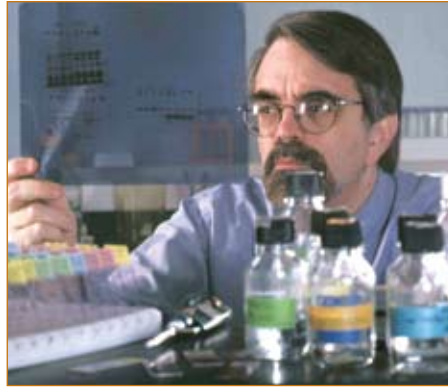
Steven Grant

The V Foundation has awarded two translational research grants to Steven Grant, MD, Associate Director of Translational Research at the Virginia Commonwealth University Massey Cancer Center.

The first, in 2003, was a three-year grant of \$100,000 per year to continue his work developing novel treatments for hematologic malignancies, including multiple myeloma and non-Hodgkin's lymphoma.

"That award catalyzed a novel chemotherapeutic strategy involving the simultaneous interruption of two cancer cell signaling pathways," said Grant, who holds the Shirley Carter and Sture Gordon Olsson chair in oncology at VCU.

At the time, the study represented a departure from previous anti-cancer approaches involving the combination of standard chemotherapeutic



Steven Grant, MD
Associate Director of Translational Research
VCU Massey Cancer Center

agents, which tend to be relatively non-selective in their actions.

The experimental drugs include a class of compounds known as proteasome inhibitors, which disrupt the ability of tumor cells to degrade unwanted proteins, and the cell-cycle inhibitor flavopiridol, which blocks cancer cell progression through the cell cycle. This research resulted in a multi-institutional, NCI-sponsored Phase I clinical trial for patients with various lymphomas or multiple myelomas, and initial results of this trial are encouraging.

In 2007, The V Foundation awarded Grant a three-year, \$600,000 grant to pursue another novel strategy directed against leukemia. This strategy is based on recent publications by his group indicating that the anti-cancer drug sorafenib decreases expression of the survival protein Mcl-1, and dramatically increases the antileukemic activity of a class of agents known as Bcl-2 antagonists.

"We hope that the information generated with the support of this award will ultimately enable us to initiate clinical trials in patients with refractory leukemia and potentially other hematologic malignancies," said Grant.

Jeffrey Settleman

Lung cancer remains the leading cause of cancer death and is largely refractory to conventional chemotherapy. Approximately 10 percent of non-small cell lung cancers, the most common type, harbor specific activating mutations within the epidermal growth factor receptor (EGFR) gene, and the presence of these mutations in tumors is well correlated with dramatic clinical responses to a new class of EGFR inhibitory drugs, gefitinib (Iressa) and erlotinib (Tarceva), in treated patients.

Although clinical responses to these drugs can be rapid and dramatic, the average response duration is typically limited to six to twelve months, due to acquired drug resistance, and this remains an important limitation of such therapy. Understanding the mechanisms by which previously sensitive tumors become drug-resistant is essential to designing clinical strategies to convert short-term responses into durable remissions.



Jeffrey Settleman, Ph.D.
Professor of Medicine
*Harvard Medical School
MGH Cancer Center*

With generous support from The V Foundation, we have begun to develop cell culture models that recapitulate the acquisition of drug resistance during treatment. Those studies have revealed a novel mechanism of drug resistance that is reversible over time, and which may explain the observation that some lung cancer patients that initially respond to EGFR inhibitors, and then experience disease progression, demonstrate a second response to drug re-treatment after a "drug holiday."

We have begun to define the molecular machinery that regulates this reversible state of "drug tolerance." We have also identified agents that can interfere with it, potentially paving the way for novel therapeutic strategies to prevent the development of more stable drug resistance, and thereby, prolong remissions in cancer patients treated with EGFR inhibitors.





Designated Grant PROJECT PROFILE

ABOUT THIS GRANT

The V Foundation's Designated Grant Program allows gifts of any amount to be donated to specific cancer facilities throughout the country. The flexibility of this program allows businesses, individuals and events to choose particular facilities and types of research to fund.

The Designated Grant Program funds projects in communities or regions local to the fund-raising area. Fund-raisers and donors work with The V Foundation to identify a specific project, facility or awareness program. The V Foundation has invested \$12.2 million to worthy projects and facilities in 29 states nationwide. Victoria Seewaldt received one of the 112 Designated Grants that have been awarded since the inception of the program in 1994.

Victoria Seewaldt

Despite improvements in chemotherapy, too many women still die from breast cancer. Even when the treatment works, many women have long-term side effects. According to Victoria Seewaldt, MD, half of women at high risk of developing breast cancer have a specific alteration in their breast cells indicating that significant damage has occurred and breast cancer might be imminent. Dr. Seewaldt is a breast oncologist and co-leader at Duke Comprehensive Cancer Center's Breast and Ovarian Oncology Research Program.

In 2000, The V Foundation awarded Dr. Seewaldt a two-year grant to support her bench science translational research program in breast cancer prevention. In 2002, further funding from a V Foundation Designated Grant helped Dr. Seewaldt and her team to establish the Duke Breast Wellness Clinic. This additional investment allowed them to translate their research findings from the lab directly to the clinic.

The clinic provides breast Magnetic Resonance Imaging, state-of-the-art experimental imaging and early detection using Random Periareolar Fine Needle Aspiration (RPNFA). Each year, 650 women who are at risk for breast cancer are seen at the Breast Wellness Clinic. Approximately 35 percent of the women are African-American. "Without the \$50,000 in seed money provided by The V Foundation, our clinic would not exist," says Seewaldt. The clinic is now supported by \$1.5 million a year in grant funding.

Currently, Seewaldt has begun to test breast cells removed from women at high risk for breast cancer, using cutting-edge technology that includes large-scale Protein Microarray tools and Nanobiosensors. These Protein Array tools allow Seewaldt to test the inner workings of breast cells, and provide her with the

unique opportunity to test exactly what goes wrong before cancer begins. Nanobiosensors enable Seewaldt to place tiny probes inside damaged breast cells that are removed from women at increased risk for breast cancer and precisely test whether these cells will respond to prevention drugs. The seed money from The V Foundation for \$100,000 resulted in three RO1 grants, four AVON/NCI trials, one SPORE grant, five post-doctoral grants and three pre-doctoral grants. There are also collaborations across the country with investigators at UCSF, Ohio State, MD Anderson, George Mason, Dana Farber and UC Davis.

Seewaldt and her team now have a unique opportunity to investigate how breast cancer begins and to test new tools to help determine what prevention drugs might work best in an individual woman. "Our goal is to bring the latest cutting-edge research to women, but not lose the warmth of woman-to-woman personal care. Our motto is 'research with heart and a hug,'" says Seewaldt.

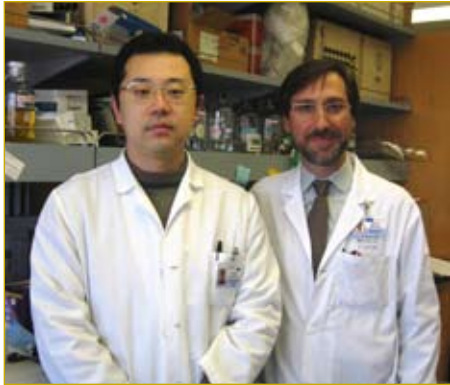
Seewaldt has become a worldwide leader in breast cancer prevention research. She has made important discoveries in detection and prevention of the disease. She has been featured on CNN and in *USA Today* for her important scientific work.

"It is with hope that I do my work and thank everyone who has supported The V Foundation," says Dr. Seewaldt. "You are the people who have allowed translational research to go forward and allow people like me to keep on asking questions and finding answers."

-Victoria Seewaldt, MD

Victoria Seewaldt, MD (above)

Associate Professor of Medicine-Oncology, Duke Comprehensive Cancer Center



Antoni Ribas, M.D. & Richard Koya, M.D., Ph.D.
UCLA's Jonsson Comprehensive Cancer Center

The V Foundation-Gil Nickel Family Endowed Fellowship in Melanoma Research

Gil Nickel, a visionary of the Napa Valley wine industry and proprietor of Far Niente winery, lost a courageous battle against melanoma in 2003. In tribute to Gil, The V Foundation and the Gil Nickel family have joined forces to establish The V Foundation-Gil Nickel Family Endowed Fellowship in Melanoma Research at UCLA's Jonsson Comprehensive Cancer Center (JCCC). The goal of the fellowship is to recruit and train new generations of promising young melanoma researchers.

PROFILE

The number of melanoma cases is increasing faster than any other cancer type as more non-Caucasian populations become affected. There are few effective treatment alternatives to surgery for this aggressive type of cancer.

Under the mentorship of Antoni Ribas, M.D., V Foundation-Nickel Fellows at the JCCC will focus their efforts on innovative interdisciplinary melanoma research projects, particularly those that facilitate translation of laboratory advances to pre-clinical and clinical testing of novel treatments for patients. The objective is to bring together the promise of targeted

therapy and immunotherapy for cancer to treat metastatic melanoma's debilitating side effects for patients. "Recent efforts involving monoclonal antibodies, sentinel lymph nodes and immunotherapy have created new hope for the development of the next generation of prevention and treatment alternatives," says inaugural V Foundation-Nickel Fellow, Richard Koya, M.D., Ph.D. Dr. Koya is inspired by the opportunity to develop new treatments that heal patients without harming them.

Dr. Koya is working on a project to genetically engineer the immune system to generate large numbers of melanoma-specific killer cells. This involves molecular biology studies to optimize the procedures to engineer the immune system, studies in animal models to understand how these cancer-redirection cells work using modern molecular imaging techniques and bringing this novel approach to the clinic.

Projects like this will allow Dr. Koya and each of the V Foundation-Nickel Fellows who follow him to participate along the entire continuum of leading-edge melanoma research, incorporating gene medicine, vaccine research, targeted therapies, basic science and clinical trials.

The Joan Rombauer Endowed Fellowship in Pancreatic Research

Joan and Koerner Rombauer, owners of Rombauer Vineyards, were heartbroken when Joan was diagnosed with pancreatic cancer in 1999. Given slim chances for living through the year, Joan and Koerner became crusaders for their own fund-raising campaign in order to battle the disease. Joan lost her battle with cancer in 2003. In Joan's memory, The V Foundation and the Rombauer family have come together to create the Joan Rombauer Fellowship Grant. The fellowship will endow in perpetuity the salary of a researcher who holds great potential for advancing the diagnosis, treatment and prevention of pancreatic cancer.

Koerner Rombauer (center wearing white shirt), Beth Nickel (third from right) and friends (right)

PROFILE

The Rombauer Fellowship is currently supporting the research efforts of Dr. Andrew H. Ko, an assistant professor at the University of California San Francisco (UCSF) Helen Diller Family Comprehensive Cancer Center. Dr. Ko joined the UCSF faculty in 2001 after completing his oncology fellowship at Stanford University. He is focusing his attention on novel therapeutic strategies for pancreatic cancer and is presently the principal investigator on a variety of clinical trials evaluating new drugs and new combinations of agents in this disease.

One of Dr. Ko's prime initiatives is trying to develop a more "patient-tailored" approach to therapy for those with metastatic disease. This individualized approach requires obtaining fresh tumor tissue—a longstanding challenge in this patient population—so that molecular profiling and analyses of candidate genes can be conducted. These tumor characteristics are then used to help determine which individual is likely to respond to specific chemotherapeutic and/or biologic agents. This initiative has required establishing a complex infrastructure at UCSF—crossing the disciplines of pathology, interventional radiology, cancer biology and biopharmaceutical sciences—as well as enlisting the participation of collaborators in biotechnology and the pharmaceutical industry. Clinical studies based on this approach will allow

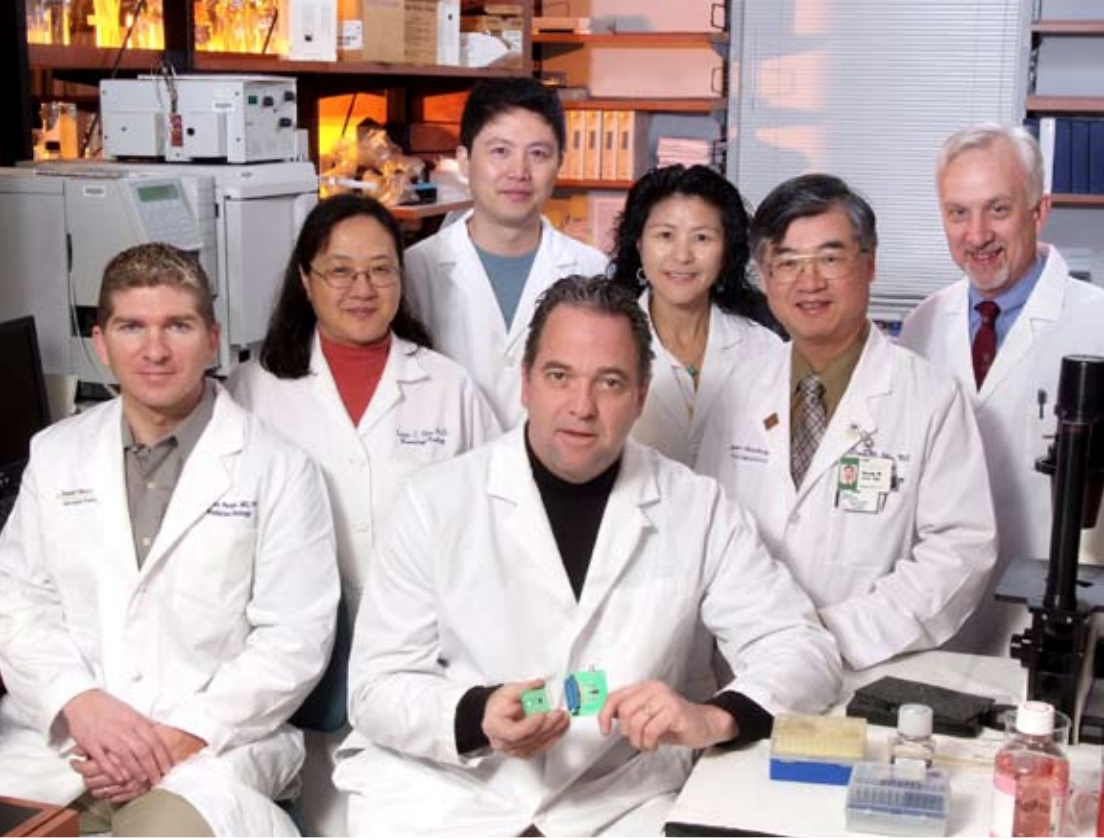


Dr. Andrew Ko
University of California San Francisco Helen Diller Family Comprehensive Cancer Center

for selection of the most promising treatment strategy for each individual, whether standard of care or novel investigational therapies.

Other research projects Dr. Ko is leading include the detection and characterization of tumor and endothelial cells in the peripheral blood of patients with pancreatic cancer and a collaborative NIH-funded effort with members of the UCSF Department of Biostatistics and Epidemiology, which focuses on the molecular epidemiology of patients with newly diagnosed pancreatic cancer, to look for genetic and lifestyle risk factors that may predispose individuals to development of this disease.





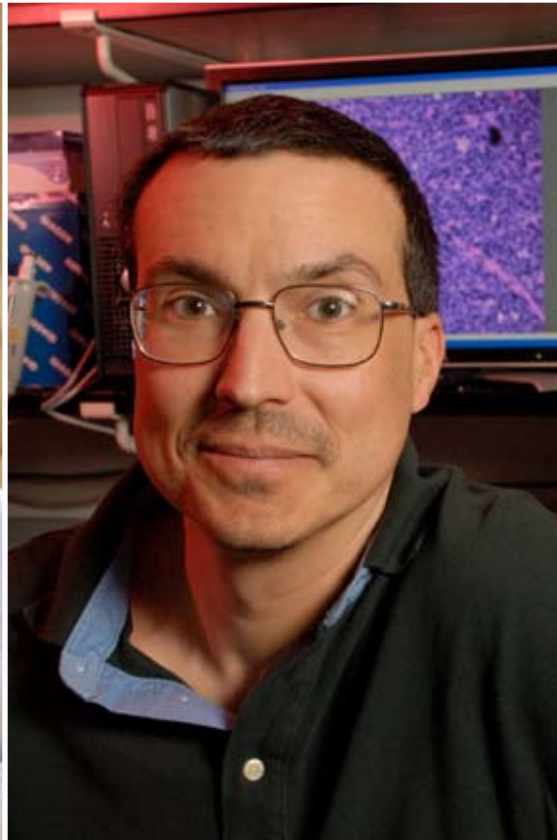
Partners in EXCELLENCE

An increased emphasis placed on collaboration in cancer research led The V Foundation to recently establish its Partners in Excellence program. Partners in Excellence is designed to foster collaboration and cooperation between research institutions, other non-profits funding cancer research and corporations that provide the products and services necessary in the fight against cancer.

Partners in Excellence research grants advance projects across cancer centers to accelerate the development of new knowledge and treatments for various cancers. These grants are designed to enhance the intellectual synergy of respected researchers who share a common vision yet remain in separate institutions. The goal is to speed the flow of scientific information from the researchers to the clinicians and the patients.

Thus far, The V Foundation has invested in two significant projects in collaborative research. Profiles of the collaboration between Emory University's Winship Cancer Institute and Georgia Tech University and the research project uniting Duke Comprehensive Cancer Center and UNC Lineberger Comprehensive Cancer Center follow this introduction.

In the near future, a partnership between The V Foundation for Cancer Research and the Lance Armstrong Foundation will fund a new Survivorship Center to increase the effectiveness of survivorship through research and the sharing of best practices. Longer term initiatives will focus on partnerships with other cancer advocates to support education and awareness.



Emory-Georgia Tech (top)

In Front: Charles Perkins, MD, PhD and William Hunt, PhD. Middle Row: Georgia Chen, PhD and Dong Shin, MD. Back Row: Wei Zhou, PhD, Lilly Yang, MD and Paul Doetsch, PhD

Joseph Nevins, PhD (bottom left)

Barbara Levine Professor of Breast Cancer Genomics, Director of the IGSP's Center for Applied Genomics & Technology, and Co-leader of the Duke Comprehensive Cancer Center's Genetics and Genomics Research Program

Charles Perou, PhD (bottom right)

Associate Professor of Genetics and Pathology at UNC Lineberger Comprehensive Cancer Center

UNC-Duke Program in Breast Cancer Genomics

Oncologists continually face the challenge of matching the right therapeutic regimen with the right patient, balancing relative benefit with risk in order to achieve the most favorable outcome. This challenge is often daunting with marginal success rates in many advanced diseases, likely reflecting the enormous complexity of the disease process and the inability to properly prescribe the use of available therapeutics.

In 2006, a \$2 million grant from The V Foundation for Cancer Research funded the UNC-Duke Program in Breast Cancer Genomics, a partnership between the Duke Comprehensive Cancer Center and UNC Lineberger Comprehensive Cancer Center to study individualized treatments for breast cancer patients. The V Foundation grant aimed to further the studies of Duke Comprehensive Cancer Center researchers led by Joseph Nevins, PhD, and UNC Lineberger Comprehensive Cancer Center researchers led by Charles Perou, PhD.

The UNC-Duke Partners in Excellence Program has successfully combined the complementary skills of UNC and Duke investigators to dissect the complexity of breast cancer. Researchers at both universities have taken on the challenge

of developing the most appropriate treatment strategy for the individual cancer patient using recent advances in genomic technologies to identify unique characteristics of individual tumors.

UNC researchers have used gene expression array analysis to identify four to five different subclasses of breast cancer. Studies at Duke have used gene expression arrays to identify abnormalities in different cellular signaling pathways in breast cancer cells. By combining these analyses, together with other studies that have identified patterns of gene expression that predict response to conventional chemotherapeutic drugs, the investigators have developed a more precise picture of therapeutic opportunities for breast cancer.

Currently, a prospective clinical trial is in the planning stages that will focus on the use of genomic information as a basis to guide therapeutic options for advanced stage breast cancer patients. Researchers anticipate that this study will provide a tangible result of the combined UNC-Duke studies to take the initial steps for the eventual goal of using genomic information to develop truly personalized therapies for breast cancer.

Georgia Tech-Emory Program For Innovative Cancer Technologies

From 2004 to 2006, The V Foundation awarded grants to support Emory University's Winship Cancer Center and the Georgia Institute of Technology's Program for Innovative Cancer Technologies. These grants provided seed funding for research projects focused on new developments in the field of nanotechnology and its application in cancer research.

Nanotechnology, empowered by the genomic understanding of human cancers, offers promise in far earlier cancer detection, personalized diagnostics for targeted treatment and nano-scale creation of new classes of antineoplastic drugs for metastatic diseases. This potentially gives scientists the ability to rapidly analyze biopsy tissue from cancer patients so that doctors can provide the most appropriate and effective therapy for each patient.

In 2005, under the direction of Doctors Shuming Nie and Jonathan Simons, Emory University and Georgia Institute of Technology were awarded a tremendous \$15 million grant and designated as a Center of Nanotechnology Excellence by the National Institutes of Health (NIH).

The initial seed money from The V Foundation also helped fund the development of a sensitive, inexpensive early detection system for cancer diagnosis and therapy using advanced, cutting edge technology known as ACuRay™. Cancer cells produce abnormal proteins—biomarkers—that are characteristic of their type of disease. Among novel protein detection methods under development, the ACuRay™ technology is considered one of the leading systems through which scientists are hoping to detect miniscule amounts of cancer-specific, cellular proteins.

In 2007, The V Foundation continued to invest in the Georgia Tech-Emory partnership by funding a project entitled "An Ultra-Sensitive Biomarker Detector for Head and Neck Cancer"



Shuming Nie, Ph.D.
Professor, *The Wallace H. Coulter Distinguished Chair, Director for Nanotechnology and Bioengineering Winship Cancer Institute*

that benefited from important discoveries in the earlier nanotechnology research.

A team of engineers and researchers led by Dr. Paul Doetsch is working to turn this V Foundation grant into a highly sensitive method to detect head and neck cancer earlier than ever before. Head and neck cancer is a serious, debilitating disease accompanied by physical disfigurement and high mortality rates.

“Investigators at both institutions share the common goal of individualized cancer treatment and are optimally qualified to undertake these studies. The UNC-Duke partnership has the potential to make a significant contribution to the care of women with breast cancer.”

Excerpt from The V Foundation's Scientific Advisory Board site visit report of the UNC-Duke Partners in Excellence Program in Breast Cancer Genomics.



Philanthropy

The V Foundation for Cancer Research remains focused on our fundamental mission to support research. We rely on individual and corporate support to fund our objective—to maintain the ability of researchers at all stages of their careers to continue their work.

Millions are affected directly and indirectly by cancer. In the U.S., cancer accounts for one of every four deaths. According to John E. Niederhuber, M.D., Director of the National Cancer Institute, “The number of new cancer diagnoses continues to rise, with more than 1.4 million people hearing the dreaded words ‘you have cancer’ this year in the United States alone.”

At a time when opportunities for scientific progress have never been greater, we face a federal government crisis in research funding. There are a burgeoning number of grant applications and shrinking budgets. The cancer research community increasingly struggles to attract grant money from any source. Private gifts are particularly important during this time.

People from all walks of life have joined our cause. Your generosity has enabled us to award more than 300 grants to advance

cancer research initiatives that will lead to discoveries, and one day, new treatments and cures. As responsible stewards of your funds, **100 percent of every dollar raised by The V Foundation directly supports cancer research and related programs.** Investment income from the Foundation’s endowment fund covers all operating expenses.

Charity Navigator, America’s premier charity evaluator, provides donors with the critical information they need to give them confidence in the charitable choices they make. The V Foundation for Cancer Research has earned our fifth consecutive Charity Navigator 4-star rating for our efforts to operate with utmost fiscal responsibility. Only three percent of charities have received this rating, indicating that The V Foundation outperforms most charities in America.

The V Foundation has accomplished a great deal, and with the continued support of individual and corporate donors, there are no limits to what we can accomplish in the future.

ABC SuperSign in Times Square during Jimmy V Week, a fundraising effort by Team ESPN (left)



Board of DIRECTORS

Role

The V Foundation Board of Directors is entrusted with and accountable for the strategic leadership and governance of the organization. The 29-member Board is comprised of prominent business leaders, award-winning athletes and coaches, distinguished physicians and world-renowned entertainers. Their governance is integral to the sustainability and long-term effectiveness of The Foundation in ways that are consistent with our core values and principles.

Personal Commitment

Jim personally asked the original 15 members of the Board of Directors to carry on his fight. Today, each one of them remains committed to fulfilling his legacy. Many of the new Board members had never met Jim, yet have embraced our mission. The Board works tirelessly by giving their time, energy and financial assets to help us improve every year.

Our many accomplishments start with the direction that the Board of Directors continues to set. Our Board is personally engaged, and as a result, The Foundation has achieved an unprecedented level of success for a relatively young organization. In just 14 years, we reached our goal to have 100 percent of our operating expenses covered by the endowment fund, which is an incredible example of our Board members' personal commitment. Our Board has helped us create an organization that can survive forever.

With the continued passion and commitment of our Board of Directors, we are optimistic about what the next 15 years will hold for The V Foundation.

Jim Allegro

Emeritus Director, Retired Executive Vice President, ESPN, Inc.

Robert C. Bast, Jr., M.D.

Vice President, Translational Research M.D. Anderson Cancer Center

George Bodenheimer

President, ESPN, Inc. and ABC Sports Co-Chairman, Disney Media Networks

Steven M. Bornstein

President and CEO, NFL Network

Bill Cosby

George W. Dennis III

Managing Partner, Teague, Campbell, Dennis, & Gorham, LLP

Peggy Fleming Jenkins

Sports Commentator, ABC Sports

Rosa M. Gatti

Senior Vice President, Corporate Communications and Outreach ESPN, Inc.

Philip H. Knight

Chairman of the Board, Nike, Inc.

Michael K. Krzyzewski

Head Coach, Men's Basketball Duke University

Carl C. Liebert III

Chief Executive Officer 24 Hour Fitness Worldwide

Robert E. Lloyd

Chairman, The V Foundation

Michael C. Mac Donald

President, Marketing Operations Xerox Corporation

Michael E. Marks

President, Bigwood Capital, LLC

Geoffrey S. Mason

Senior Production Specialist, ESPN

Joseph O. Moore, M.D.

Professor, Hematology & Oncology Duke University Medical Center

Robert C. Nakasone

Retired Chief Executive Officer Toys "R" Us, Inc.

Donna Orender

President, Women's National Basketball Association

Lawrence F. Probst III

Chairman of the Board, Electronic Arts

Harry E. Rhoads, Jr.

President, Washington Speakers Bureau

John Saunders

Sports Commentator, ESPN and ABC Sports

Anthony F. Smith, Ph.D.

Managing Director Leadership Research Institute

Pamela Valvano Strasser

Chairwoman, The V Foundation

Nicholas P. Valvano

Chief Executive Officer, The V Foundation

Robert Valvano

Sports Commentator

Lesley Visser

Sports Commentator, CBS and HBO

Dick Vitale

Sports Commentator, ESPN and ABC Sports

R.C. "Bucky" Waters

Retired Vice Chancellor for Special Projects Duke University Medical Center Sports Commentator

Dereck Whittenburg

Head Coach, Men's Basketball Fordham University

David W. Williams

Retired Senior Vice President Whirlpool Corporation



Scientific Advisory BOARD

Martin D. Abeloff, M.D. *(in Memoriam)*

Brilliant clinician, family man, mentor and leader are all words that described our friend, Dr. Martin Abeloff. An international authority on the treatment of breast cancer, he served as the Chief Oncologist and Director for the Sidney Kimmel Comprehensive Cancer Center at Johns Hopkins.

An esteemed member of the Scientific Advisory Board, Dr. Abeloff was a pioneer in translational research and specialized in solid-tumor research and the treatment of

lung and breast cancer. While he served as leader of the Sidney Kimmel Comprehensive Cancer Center at Johns Hopkins, the number of faculty members doubled and research funding increased six-fold.

The V Foundation has lost one of our dear friends and cancer research has lost a brilliant mind.

In honor of Dr. Abeloff, the top ranked V Scholar every year is the recipient of the Martin D. Abeloff Scholar Award.

The Scientific Advisory Board is comprised of some of the nation's leading physicians and research scientists from prominent universities and cancer centers. The Board ensures that all proposals meet the highest standards of scientific merit and that funding is properly allocated. By focusing on brilliant young investigators, the Board works toward accomplishing the goal of the foundation: eradicating cancer.



Robert C. Bast, Jr., M.D.

Vice President for Translational Research
M.D. Anderson Cancer Center
University of Texas
Houston, Texas



James M. Ford, M.D.

Assistant Professor of Medicine and Genetics, Stanford University School of Medicine
Stanford, California



William T. Beck, Ph.D.

Professor and Head, Department of Biopharmaceutical Sciences
University of Illinois
Chicago, Illinois



Lynn M. Matrisian, Ph.D.

Professor and Chair
Department of Cancer Biology
Vanderbilt-Ingram Cancer Center
Nashville, Tennessee



Gerold Bepler M.D., Ph.D.

Program Leader,
Thoracic Oncology, H. Lee Moffitt Cancer Center and Research Institute
Tampa, Florida



Joseph O. Moore, M.D.

Professor
Hematology and Oncology
Duke University Medical Center
Durham, North Carolina



Paul F. Engstrom, M.D.

Senior Vice President for Population Science, Fox Chase Cancer Center
Philadelphia, Pennsylvania



David E. Schuller, M.D.

Chief Executive Officer
Arthur G. James Cancer Hospital and Richard J. Solove Research Institute
The Ohio State University
Columbus, Ohio



Olivera J. Finn, Ph.D.

Professor and Chair
Department of Immunology
University of Pittsburgh
School of Medicine
Pittsburgh, Pennsylvania



Jonathan W. Simons, M.D.

Chief Executive Officer
Prostate Cancer Foundation
Santa Monica, California



Richard I. Fisher, M.D.

Director
James P. Wilmot Cancer Center
Rochester, New York



Margaret A. Tempero, M.D.

Chief, Medical Oncology
Department of Medicine, UCSF
Comprehensive Cancer Center
San Francisco, California



Grant Recipients Through Time

Since awarding our first grant in 1994, The V Foundation has funded over 300 grants to the brightest physicians and scientists as they pioneer techniques to make breakthroughs in cancer research. By investing in promising people and projects, we continue to make great strides in unraveling the mysteries of cancer.

V SCHOLAR GRANT RECIPIENTS

2007 V Scholar Grants

Ian J. Davis, M.D., Ph.D.

UNC Lineberger Comprehensive Cancer Center
Martin D. Abeloff, M.D. V Scholar Award

James Brugarolas, M.D., Ph.D.

Simmons Comprehensive Cancer Center

Jack D. Bui, M.D., Ph.D.

UCSD Moores Cancer Center

Dean Ho, Ph.D.

Lurie Comprehensive Cancer Center

Susan M. Janicki, Ph.D.

The Wistar Institute

Carla Kim, Ph.D.

Children's Hospital Boston
In Memory of Christopher T. Carroll

Ju-Seog Lee, Ph.D.

M.D. Anderson Cancer Center
In Honor of Robin Lail

Gregory B. Lesinski, Ph.D.

James Cancer Hospital and Solove Research Institute

Takahiro Maeda, M.D., Ph.D.

Beckman Research Institute
City of Hope National Medical Center

Raul Mostoslavsky, M.D., Ph.D.

Massachusetts General Hospital Cancer Center

Vivian G. Oehler, M.D.

Fred Hutchinson Cancer Research Center

Kathrin Plath, Ph.D.

UCLA School of Medicine

Pamela M. Pollock, Ph.D.

Translational Genomics Research Institute

Edward M. Schaeffer, M.D., Ph.D.

Sidney Kimmel Comprehensive Cancer Center
at Johns Hopkins

Jean J. Zhao, Ph.D.

Dana-Farber Cancer Institute

2006 V Scholar Grants

Eric J. Brown, Ph.D.

Abramson Family Cancer Research Institute

Charles G. Drake, M.D., Ph.D.

Sidney Kimmel Comprehensive Cancer Center
at Johns Hopkins

Seth J. Field, M.D., Ph.D.

UCSD Moores Cancer Center

Michael T. Hemann, M.D.

MIT Center for Cancer Research

Konrad Hochedlinger, Ph.D.

Massachusetts General Hospital Cancer Center

Qihong Huang, M.D., Ph.D.

The Wistar Institute

Eric C. Lai, Ph.D.

Memorial Sloan-Kettering Cancer Center

Hanna Mikkola, M.D., Ph.D.

UCLA Jonsson Comprehensive Cancer Center

Piers Nash, Ph.D.

Ben May Institute for Cancer Research

Erik A. Ranheim, M.D., Ph.D.

University of Wisconsin Medical School

Stefan Riedl, Ph.D.

The Burnham Institute for Medical Research

Laura Rush, D.V.M., Ph.D.

James Cancer Hospital and Solove Research Institute

Reuben J. Shaw, Ph.D.

The Salk Institute for Biological Sciences

Muneesh Tewari, M.D., Ph.D.

Fred Hutchinson Cancer Center

Zhenghe John Wang, Ph.D.

Case Comprehensive Cancer Center

2005 V Scholar Grants

Robert Baiocchi, M.D., Ph.D.

James Cancer Hospital and Solove Research Institute

Pilar Blancafort, Ph.D.

UNC Lineberger Comprehensive Cancer Center

Wei Chen, Ph.D.

Duke University Medical Center

Nadia Dahmane, Ph.D.

The Wistar Institute

Randall S. Davis, M.D.

University of Alabama at Birmingham

Patricia Ernst, Ph.D.

Norris Cotton Cancer Center

Elsa R. Flores, Ph.D.

M.D. Anderson Cancer Center

Ananda W. Goldrath, Ph.D.

UCSD Moores Cancer Center

Johanna Joyce, Ph.D.

Memorial Sloan-Kettering Cancer Center

Anthony Letai, M.D., Ph.D.

Dana-Farber Cancer Institute

Kevin D. Mills, Ph.D.

The Jackson Laboratory

Gary W. Reuther, Ph.D.

H. Lee Moffitt Cancer Center

Davide Ruggero, Ph.D.

Fox Chase Cancer Center

Toshiyasu Taniguchi, M.D., Ph.D.

Fred Hutchinson Cancer Research Center

Osamu Tetsu, M.D., Ph.D.

UCSF Comprehensive Cancer Center

Lisa L. Wang, M.D.

Texas Children's Cancer Center

Rui Zhao, Ph.D.

University of Colorado Cancer Center

Lee Zou, Ph.D.

Massachusetts General Hospital Cancer Center

2004 V Scholar Grants

Iannis Aifantis, Ph.D.

The University of Chicago
2004 Vintner Grant
In Honor of Garen and Shari Staglin

Woojin An, Ph.D.

USC Norris Comprehensive Cancer Center

James E. Bear, Ph.D.

UNC Lineberger Comprehensive Cancer Center
In Honor of Frank McCann

Marcia S. Brose, M.D., Ph.D.

Abramson Cancer Center of the University of PA

Andrew B. Herr, Ph.D.

University of Cincinnati

Xuejun Jiang, Ph.D.

Memorial Sloan-Kettering Cancer Center

Elizabeth R. Lawlor, M.D., Ph.D., FRCPC

Children's Hospital of Los Angeles

Susan E. Lyons, M.D., Ph.D.

University of Michigan Comprehensive Cancer Center

Amy E. Pasquinelli, Ph.D.

UCSD Moores Cancer Center
In Honor of Andrew and Julie Constantin

Jeffrey C. Rathmell, Ph.D.

Duke University Cancer Center
2004 JVCGC Volunteer Grant
In Honor of Bruce and Susie Foster

Sarah Rice, Ph.D.

Northwestern University Medical School

Sansana Sawasdikosol, Ph.D.

New York University Cancer Institute

Loren D. Walensky, M.D., Ph.D.

Dana-Farber Cancer Institute

Yong Wan, Ph.D.

University of Pittsburgh Cancer Institute

Michael L. Whitfield, Ph.D.

Norris Cotton Cancer Center

2003 V Scholar Grants

Gerard C. Blobe, M.D., Ph.D.

Duke Comprehensive Cancer Center

Anjen Chenn, M.D., Ph.D.

Robert H. Lurie Comprehensive Cancer Center

Ramana Davuluri, Ph.D.

James Cancer Hospital and Solove Research Institute

James DiRenzo, Ph.D.

Norris Cotton Cancer Center

Lawrence Fong, M.D.

UCSF Comprehensive Cancer Center

Douglas K. Graham, M.D., Ph.D.

Children's Hospital, University of Colorado

Prasad V. Jallepalli, M.D., Ph.D.

Memorial Sloan-Kettering Cancer Center

Deanna M. Koeppe, Ph.D.

University of Minnesota Cancer Center

Shaoguang Li, M.D., Ph.D.

The Jackson Laboratory

Ben Ho Park, M.D., Ph.D.

Sidney Kimmel Comprehensive Cancer Center
at Johns Hopkins

W. Kimryn Rathmell, M.D., Ph.D.

UNC Lineberger Comprehensive Cancer Center

Maria S. Soengas, Ph.D.

University of Michigan Comprehensive Cancer Center

Götz-Ulrich von Bülow, Ph.D.

Indiana University Cancer Center

Lin Zhang, Ph.D.

University of Pittsburgh Cancer Institute

Sandra S. Zinkel, M.D., Ph.D.

Dana-Farber Cancer Institute

2002 V Scholar Grants

Ricardo C. T. Aguiar, M.D., Ph.D.

Dana-Farber Cancer Institute

Gabriele Bergers, Ph.D.

UCSF Comprehensive Cancer Center

Funded by V Foundation Wine Celebration

Fred Bunz, M.D., Ph.D.

Sidney Kimmel Comprehensive Cancer Center

at Johns Hopkins

Arul M. Chinnaiyan, M.D., Ph.D.

University of Michigan Medical School

Frank B. Furnari, Ph.D.

UCSD Moores Cancer Center

Denis C. Guttridge, Ph.D.

James Cancer Hospital and Solove Research Institute

Joseph G. Hacia, Ph.D.

USC Norris Comprehensive Cancer Center

Jan Karlseder, Ph.D.

The Salk Institute

Ralf Landgraf, Ph.D.

University of California, Los Angeles

Jason D. Lieb, Ph.D.

UNC Lineberger Comprehensive Cancer Center

Kay Macleod, Ph.D.

University of Chicago Cancer Research Center

Robert A. Marciniak, M.D., Ph.D.

San Antonio Cancer Institute

Senthil K. Muthuswamy, Ph.D.

Cold Spring Harbor Laboratory

Man-Wah Tan, Ph.D.

Stanford University

Funded by V Foundation Wine Celebration

Valeri Vasioukhin, Ph.D.

Fred Hutchinson Cancer Research Center

Robert H. Vonderheide, M.D., D. Phil.

University of Pennsylvania School of Medicine

Jennifer Westendorf, Ph.D.

University of Minnesota Cancer Center

2001 V Scholar Grants

Steven Artandi, M.D., Ph.D.

Stanford University School of Medicine

John D. Crispino, Ph.D.

The University of Chicago Cancer Research Center

Blossom Damania, Ph.D.

UNC Lineberger Comprehensive Cancer Center

Alexander L. Dent, Ph.D.

Indiana University Cancer Center

Laura A. Johnston, Ph.D.

Herbert Irving Comprehensive Cancer Center

Weiqun Li, M.D.

Lombardi Cancer Center

Lawrence C. Myers, Ph.D.

Norris Cotton Cancer Center

Kornelia Polyak, M.D., Ph.D.

Dana-Farber Cancer Institute

Jonathan D. Powell, M.D., Ph.D.

Johns Hopkins Oncology Center

Karen Vasquez, Ph.D.

M.D. Anderson Cancer Center

Zhuohua Zhang, Ph.D.

The Burnham Institute

2000 V Scholar Grants

Maria-Luisa Alegre, M.D., Ph.D.

University of Chicago Cancer Research Center

Dominique Broccoli, Ph.D.

Fox Chase Cancer Center

Lisa M. Coussens, Ph.D.

UCSF Comprehensive Cancer Center

J. Alan Diehl, Ph.D.

Eppley Cancer Center

Dean W. Felsher, M.D., Ph.D.

Stanford University School of Medicine

Thomas M. Guadagno, Ph.D.

H. Lee Moffitt Cancer Center

Masaaki Hamaguchi, M.D., Ph.D.

Cold Spring Harbor Laboratory

Shawn E. Holt, Ph.D.

Massey Cancer Center, Virginia

Commonwealth University

Stuart Lutzker, M.D., Ph.D.

The Cancer Institute of New Jersey

Steven B. McMahon, Ph.D.

The Wistar Institute

Nickolas Papadopoulos, Ph.D.

Herbert Irving Comprehensive Cancer Center

Jill M. Schumacher, Ph.D.

M.D. Anderson Cancer Center

Victoria Seewaldt, M.D.

Duke Comprehensive Cancer Center

Jeffrey R. Smith, M.D., Ph.D.

Vanderbilt Cancer Center

Marcel R. M. van den Brink, M.D., Ph.D.

Memorial Sloan-Kettering Cancer Center

Yi Zhang, Ph.D.

UNC Lineberger Comprehensive Cancer Center

1999 V Scholar Grants

Peter D. Adams, Ph.D.

Fox Chase Cancer Center

Carolee Barlow, M.D., Ph.D.

Salk Institute

Phang-Lang Chen, Ph.D.

San Antonio Cancer Institute

Chin Chiang, Ph.D.

Vanderbilt Cancer Center

Lynda Chin, M.D.

Dana-Farber Cancer Institute

Christopher Counter, Ph.D.

Duke Comprehensive Cancer Center

Nam Hoang Dang, M.D., Ph.D.

M.D. Anderson Cancer Center

James M. Ford, M.D.

Stanford University School of Medicine

Christoph Lengauer, Ph.D.

Johns Hopkins Oncology Center

Gustavo W. Leone, Ph.D.

James Cancer Hospital and Solove Research Institute

Thomas Ludwig, Ph.D.

Herbert Irving Comprehensive Cancer Center

Michael P. Myers, Ph.D.

Cold Spring Harbor Laboratory

Ramin Shiekhhattar, Ph.D.

The Wistar Institute

Todd Waldman, M.D., Ph.D.

Lombardi Cancer Research Center

Ebrahim Zandi, Ph.D.

USC Norris Comprehensive Cancer Center

1998 V Scholar Grants

Atul Bedi, M.D.

Johns Hopkins Oncology Center

Peter Brooks, Ph.D.

USC Norris Comprehensive Cancer Center

William E. Carson, M.D.

James Cancer Hospital and Solove Research Institute

Thomas R. Coleman, Ph.D.

Fox Chase Cancer Center

Andrew Futreal, Ph.D.

Duke University Comprehensive Cancer Center

James Koh, Ph.D.

Vermont Cancer Center

Dimitar Nikolov, Ph.D.

Memorial Sloan-Kettering Cancer Center

Charles Rudin, M.D., Ph.D.

University of Chicago Cancer Research Center

Ke Shuai, Ph.D.

UCLA Jonsson Comprehensive Cancer Center

Yan A. Su, C.M.D., Ph.D.

Lombardi Cancer Research Center

Charles Theuer, M.D.

Chao Family Comprehensive Cancer Center

David W. Threadgill, Ph.D.

Vanderbilt Cancer Center

Chuan Yue Wu, Ph.D.

University of Alabama Comprehensive Cancer Center

1997 V Scholar Grants

John Carethers, M.D.

UCSD Moores Cancer Center

James DeGregori, Ph.D.

University of Colorado Cancer Center

Paul Dent, Ph.D.

Massey Cancer Center

Virginia Commonwealth University

Tatyana Golovkina, Ph.D.

The Jackson Laboratory

Rafael Herrera, Ph.D.
San Antonio Cancer Institute

Jin Jen, M.D., Ph.D.
Johns Hopkins Oncology Center

Akiko Shimamura, M.D., Ph.D.
Dana-Farber Cancer Institute

Linda Van Aelst, Ph.D.
Cold Spring Harbor Laboratory

Hong Wu, M.D., Ph.D.
UCLA Jonsson Comprehensive Cancer Center

Hong Yan, Ph.D.
Fox Chase Cancer Center

Elizabeth Yang, M.D., Ph.D.
Vanderbilt Cancer Center

1996 V Scholar Grants

Powel Brown, M.D., Ph.D.
San Antonio Cancer Institute

Rolf Freter, M.D., Ph.D.
Herbert Irving Comprehensive Cancer Center

John Gasdaska, M.D.
University of Arizona Cancer Center

James Herman, M.D.
Johns Hopkins Oncology Center

Bo Liu, Ph.D.
University of Pittsburgh Cancer Institute

Neil Spector, M.D.
University of Miami

Christopher Weghorst, Ph.D.
James Cancer Hospital and Solove Research Institute

1995 V Scholar Grants

Thomas Gajewski, M.D., Ph.D.
University of Chicago Cancer Research Center

Leland Powell, M.D., Ph.D.
UCSD Moores Cancer Center

1994 V Scholar Grants

Gerold Bepler, M.D., Ph.D.
Duke University Comprehensive Cancer Center

Daniel Hochhauser, M.D., Ph.D.
Memorial Sloan-Kettering Cancer Center

TRANSLATIONAL GRANT RECIPIENTS

2007 Translational Grants

Kenneth D. Aldape, M.D., and Howard Colman, M.D., Ph.D.
M.D. Anderson Cancer Center

Emily K. Bergsland, M.D. and Douglas Hanahan, Ph.D.
UCSF Comprehensive Cancer Center

WenYong Chen, Ph.D., and Ravi Bhatia, M.D.
City of Hope Beckman Research Institute

Michael Goggins, M.D., and Marcia Canto, M.D., MHS
Sidney Kimmel Comprehensive Cancer Center at Johns Hopkins

Steven Grant, M.D., Paul Dent, Ph.D., John Roberts, M.D., and Mohamed Rahmani, Ph.D.
Virginia Commonwealth University-Massey Cancer Center

Markus Mischen, M.D., Michael Kahn, Ph.D., Yong-Mi Kim, M.D., MPH, and Allen S. Yang, M.D., Ph.D.
USC Norris Comprehensive Cancer Center

2006 Translational Grants

Vadim Backman, Ph.D.
Lurie Comprehensive Cancer Center at Northwestern University

Alan P. Fields, Ph.D.
Mayo Clinic Cancer Center

Anil Potti, M.D.
Duke University Comprehensive Cancer Center

Ann Richmond, Ph.D. and Jeff Sosman, M.D.
Vanderbilt-Ingram Cancer Center

Kevin Shannon, M.D.
UCSF Comprehensive Cancer Center

Robert H. Silverman, Ph.D.
Cleveland Clinic-Lerner Research Institute

2005 Translational Grants

James D. Griffin, M.D., D. Gary Gilliland, M.D., Martha Wadleigh, M.D., Richard Stone, M.D., and Martin Sattler, M.D.
Dana-Farber Cancer Institute

Robert D. Ladner, Ph.D., Heinz-Josef Lenz, M.D., and Susan Groshen, Ph.D.
USC Norris Comprehensive Cancer Center

Miguel A. Villalona-Calero, M.D., Roger Briesewitz, Ph.D., Kenneth K. Chan, Ph.D., Charis Eng, M.D., Ph.D., William J. Hicks, M.D., Wolfgang Sadee, Ph.D., Larry J. Schaaf, Ph.D., and Donn C. Young, Ph.D.
James Cancer Hospital and Solove Research Institute

2004 Translational Grants

Theresa A. Guise, M.D.
University of Virginia Cancer Center

Mark R. Parthun, Ph.D.
James Cancer Hospital and Solove Research Institute

Peter O'Connell, Ph.D.
Massey Cancer Center
Virginia Commonwealth University

Jeffrey E. Settleman, Ph.D.
Massachusetts General Hospital Cancer Center
In Memory of Christopher T. Carroll

2003 Translational Grants

Richard J. Gilbertson, M.D., Ph.D., Amar Gajjar M.D., and Helen Poppleton, Ph.D.
St. Jude Childrens' Research Hospital

Steven Grant, M.D., Paul Dent, Ph.D., and John Roberts, M.D.
Virginia Commonwealth University Medical College

W. Martin Kast, Ph.D., Jeffrey S. Weber, M.D., Ph.D., Laila Muderspach, M.D., I. Caroline Le Poole, Ph.D., and Diane M. Da Silva, Ph.D.
USC Norris Comprehensive Cancer Center

2002 Translational Grants

James M. Ford, M.D. and Sylvia Plevritis, Ph.D.
Stanford University School of Medicine

Hyam I. Levitsky, M.D.
Sidney Kimmel Comprehensive Cancer Center at Johns Hopkins

Christoph Plass, Ph.D.
James Cancer Hospital and Solove Research Institute

2001 Translational Grants

Ronald A. DePinho, M.D. and Elizabeth Anne Maher, M.D., Ph.D.
Dana-Farber Cancer Institute

Charis Eng, M.D., Ph.D., Gustavo Leone, Ph.D., and Michael Ostrowski, Ph.D.
James Cancer Hospital and Solove Research Institute

Wadih Arap, M.D., Ph.D. and Renata Pasqualini, Ph.D.
M.D. Anderson Cancer Center

DESIGNATED GRANT RECIPIENTS

2007 Designated Grants

Joel Levine, M.D.
Carole and Ray Neag Comprehensive Cancer Center, University of Connecticut
Funded by UNICO in Memory of Anthony Gonnella

James J. Mule, Ph.D.
H. Lee Moffitt Cancer Center
Funded by the 2007 Dick Vitale Gala

Ravi Salgia, M.D.
University of Chicago Cancer Center
In Memory of Guy Geleerd

Alejandro Sweet-Cordero, M.D.
Stanford University School of Medicine
Palo Alto, CA
Funded by the Kavner Family in Honor of Reed Kavner

Emory Winship Cancer Institute and Georgia Institute of Technology
Atlanta, GA
Funded by Atlanta Friends of V

First Health Moore Regional Cancer Center
Pinehurst, NC
Funded by Jimmy V Celebrity Golf Classic

Rex Hospital Prostate Cancer Center of Excellence
Raleigh, NC
Funded by Jimmy V Celebrity Golf Classic

St. Helena Hospital Cancer Center
St. Helena, CA
Funded by the 2007 V Foundation Wine Celebration

UCLA Jonsson Comprehensive Cancer Center
Nickel Endowed Fellowship in Melanoma Research

2006 Designated Grants

Peter Albertsen, M.D.
UCONN Neag Comprehensive Cancer Center
*Funded by the Spirit of Jimmy V Gala
In Honor of Coach Jim Calhoun*

Salvatore Bertolone, M.D.
Kosair Children Hospital
Funded by Louisville Friends of V

Stephen Forman, M.D.
City of Hope Beckman Research Institute
*Funded by ESPN
In Memory of Tim Nesvig*

Alok Khorana, M.D.

James P. Wilmont Cancer Center
University of Rochester Medical Center
*Funded by Marketing Research Consultants
In Honor of Gil Hatch*

Joseph Nevins, M.D.

Duke Comprehensive Cancer Center
*Partners in Excellence
In Honor of Jamie Valvano Howard and Kelly Jo Dowd*

Robert Greiner, M.D.

Duke Children's Hospital
*Funded by the McMinn family and
The Jimmy V Celebrity Junior Golf Classic*

Georgia Tech-Emory Program for Innovative Cancer Technologies

Funded by 2006 Atlanta Friends of V

Charles Perou, M.D.

UNC Lineberger Comprehensive Cancer Center
*Partners in Excellence
In Honor of Jamie Valvano Howard and Kelly Jo Dowd*

Aleksandra Petrovic, M.D.

All Children's Hospital
*Funded by 2006 Dick Vitale's Evening with the Stars
In Honor of Timmy Berg*

Shari Pilon-Thomas, Ph.D.

H. Lee Moffitt Cancer Center
Funded by 2006 Dick Vitale's Evening with the Stars

George Y.C. Wong, Ph.D.

Strang Cancer Prevention Center
*Funded by Spirit of Jimmy V Gala
In Honor of Coach Jim Boeheim*

Hai Yan, M.D., Ph.D. and Sridharan Gururangan, M.D.

The Preston Robert Tisch Brain Tumor Center
Duke University Medical Center
In Honor of Payton Wright

2005 Designated Grants**Paola Gehrig, M.D.**

UNC Lineberger Comprehensive Cancer Center
Funded by 2004 Jimmy V Women's Basketball Classic

Jessica Fu, M.D.

UNC Lineberger Comprehensive Cancer Center
Funded by 2005 Junior Jimmy V Celebrity Golf Classic

Emory/Georgia Tech Program for Innovative Cancer Technologies

Funded by Atlanta Friends of V

Salvatore Bertolone, M.D.

Kosair Children's Hospital
Funded by Louisville Friends of V

Michel Sadelain, M.D., Ph.D.

Memorial Sloan-Kettering
*In Honor of Rudolph W. Giuliani
Funded by Spirit of Jimmy V Gala*

Gwen Quinn, Ph.D.

Moffitt Cancer and Research Center
Funded by Tampa Friends of V

Charles Powell, M.D.

Herbert Irving Comprehensive Cancer Center
Funded by UNICO in Memory of Richard Juliano

Gary Onik, M.D.

Florida Hospital Celebration Health Center
Funded by Angling Against Cancer

2004 Designated Grants**Salvatore Bertolone, M.D.**

Kosair Children's Hospital
Funded by Louisville Friends of V

James S. Economu, M.D., Ph.D.

UCLA Jonsson Comprehensive Cancer Center
Funded by ESPN and the Los Angeles Lakers

Joel Levine, M.D.

University of Connecticut Health Center
*Funded by Marketing Research Consultants
In Memory of Yetta Simon*

Mokenge P. Malafa, M.D.

H. Lee Moffitt Cancer Center
*Funded by the Tampa Friends of V
In Memory of Paul Majersky*

Carolyn Sartor, M.D.

UNC Lineberger Comprehensive Cancer Center
Funded by the 2003 Jimmy V Women's Basketball Classic

Walter Stadler, M.D.

University of Chicago, Pritzker School of Medicine
*Funded by the Windy City Golf Classic
In Memory of Michael Klein*

Winship Cancer Institute and Georgia Institute of Technology

Funded by Atlanta Friends of V

University of Pittsburgh Cancer Institute

Roswell Park Cancer Institute Buffalo
Funded by Show Your Spirit Program

2003 Designated Grants**UCSF Comprehensive Cancer Center**

The Joan Rombauer Endowed Fellowship
in Pancreatic Cancer Research
*Funded by V Foundation Wine Celebration and
the Rombauer family*

Larry Kvols, M.D.

H. Lee Moffitt Cancer Center
Funded by JVCGC in Honor of Gary Romp

Ravi Salgia, M.D., Ph.D.

University of Chicago, Pritzker School of Medicine
In Memory of Guy Geleerd

2002 Designated Grants**Andrew Krivoshik, M.D., Ph.D.**

Duke Children's Hospital
Funded by Jimmy V Celebrity Jr. Golf Classic

Paul Meyers, M.D.

Memorial Sloan-Kettering
Funded by Todd Bucher Memorial

Lynne Bemis, Ph.D.

University of Colorado Health Science Center
In Honor of Arlene Cosentino

V Foundation Cancer Rehabilitation Center

Queen of the Valley Hospital
Funded by V Foundation Wine Celebration

Peter Albertsen, M.D., Pamela Taxel, M.D.

University of Connecticut Health Center
Funded by UNICO in Memory of Leo Diana

Victoria Seewaldt, M.D.

Duke Comprehensive Cancer Center
Funded by Jimmy V Women's Basketball Classic

2001 Designated Grants**Jeffrey Axelrod, M.D., Ph.D.**

Stanford University
Funded by V Foundation Wine Celebration

Emily K. Bergsland, M.D.

University of California, San Francisco
*Funded by V Foundation Wine Celebration
In Honor of Joan Rombaur*

Suzanne K. Conzen, M.D.

University of Chicago Medical Center
Funded by UNICO in Memory of Madelyn Fornelli

Calvin Kuo, M.D., Ph.D.

Stanford University
Funded by V Foundation Wine Celebration

Katherine Matthay, M.D.

UCSF Comprehensive Cancer Center
*Funded by V Foundation Wine Celebration
In Honor of Dick Grace and Jason Ferrick*

Martin McMahon, Ph.D.

UCSF Comprehensive Center
*Funded by V Foundation Wine Celebration
In Honor of Joan Rombaur*

Dimitar Nikolov, Ph.D.

Memorial Sloan-Kettering Cancer Center
*Funded by Cannata Marketing and Konica
In Memory of Cyrus R. Tyler*

2000 Designated Grants**Laura Attardi, Ph.D.**

Stanford University School of Medicine
Funded by V Foundation Wine Celebration

Grover Bagby, M.D.

Oregon Cancer Center
Funded by Papa John's International

Thomas Beck, M.D.

St. Luke's Regional Medical Center
Funded by Papa John's International

Salvatore Bertolone, M.D.

Kosair Children's Hospital
Funded by Papa John's International

Chad Brands, M.D.

Children's Medical Center of Dayton
Funded by Papa John's International

William Butler, M.D.

South Carolina Comprehensive Breast Center
Funded by Papa John's International

Vincent DeVita, M.D.

Yale University School of Medicine
*Funded by UNICO
In Memory of Louis Dante*

Timothy Eberlein, M.D.

Washington University School of Medicine
Funded by Papa John's International

Jason Fleming, M.D.

University of Texas Southwestern Medical Center
Funded by Papa John's International

Ted Ganiats, M.D., Carolyn Ross, M.D., M.P.H.

University of California, San Diego
Funded by V Foundation Wine Celebration

Edward Hirschowitz, M.D.

Markey Cancer Center University of Kentucky
Funded by Papa John's International

Ann Hoff, M.A.

Carilion Cancer Center
Funded by Papa John's International

Robert Jotte, M.D., Ph.D.

University of Colorado Cancer Center
Funded by Papa John's International

David Jones, M.D.

Huntsman Cancer Institute
Funded by Papa John's International

Ralf Krahe, Ph.D.

James Cancer Hospital & Solove Research Institute
Funded by Papa John's International

Quynh-Thu Le, M.D.

Stanford University School of Medicine
Funded by V Foundation Wine Celebration

Brian Link, M.D.

University of Iowa College of Medicine
Funded by Papa John's International

Sharon Lockhart, M.D.

Children's Hospital of Austin
Funded by Papa John's International

Sagar Lonial, M.D.

Winship Cancer Institute, Emory University

Aly Mageed, M.D.

Tod Children's Hospital
Funded by Papa John's International

James Louis McGee, M.D.

Order of St. Francis Medical Center
Funded by Papa John's International

Thomas McLean, M.D.

Bowman Gray School of Medicine
Wake Forest University
Funded by Papa John's International

Mike Moore, Ph.D.

Marshall University School of Medicine
Funded by Papa John's International

Cheppail Ramachandran, Ph.D.

Miami Children's Hospital
Funded by Papa John's International

Rolf Renne, Ph.D.

Ireland Cancer Center, Case Western University
Funded by Papa John's International

M. Patricia Riveria, M.D.

UNC Lineberger Comprehensive Cancer Center
Funded by Papa John's International

Leslie Robison, Ph.D.

University of Minnesota Cancer Center
Funded by Papa John's International

Charles Rudin, M.D., Ph.D.

University of Chicago Cancer Center
Funded by Guy Geleerd Memorial

Daitoku Sakamuro, Ph.D.

Purdue University Cancer Center
Funded by Papa John's International

Anke Schulte, Ph.D.

Lombardi Cancer Research Center
Funded by Papa John's International

Andrew E. Sloan, M.D.

Barbara Ann Karmanos Cancer Institute
Funded by Papa John's International

Peter S. Turk, M.D.

Presbyterian Cancer Center
Funded by Papa John's International

Joe Vaccaro, Ph.D.

Tulane Cancer Center
Funded by Papa John's International

Daniel Von Hoff, M.D.

Arizona Cancer Center
Funded by Papa John's International

Max Wicha, M.D.

University of Michigan
Funded by Papa John's International

David Williams, M.D.

Riley Hospital for Children
Funded by Papa John's International

Cheryl Willman, M.D.

University of New Mexico
Funded by Papa John's International

John Wingard, M.D.

Shands Cancer Center
Funded by Papa John's International

Jeff Yoder, M.D.

Parkview Stucky Research Center
Funded by Papa John's International

Cynthia Zahnow, M.D.

Johns Hopkins Oncology Center
Funded by Papa John's International

William Zamboni, M.D.

University of Pittsburgh Cancer Institute
Funded by Papa John's International

1999 Designated Grants**Mark W. Geraci, M.D.**

University of Colorado Health Science Center
Funded by Papa John's International

Peter Lee, M.D.

Stanford University School of Medicine
Funded by V Foundation Wine Celebration

Paul Meyers, M.D.

Memorial Sloan-Kettering Cancer Center
Funded in Memory of Todd Bucher

Gillian Sanders, Ph.D.

Stanford University School of Medicine
Funded by V Foundation Wine Celebration

Peter S. Turk, M.D.

Presbyterian Cancer Center
Funded by Papa John's International

Wendel Wenneker, M.D.

Queen of the Valley Hospital
Funded by V Foundation Wine Celebration

1996 Designated Grants**Hipple Cancer Research Center****Jim Valvano Day Hospital****1995 Designated Grants****Kosair Children's Hospital****1994 Designated Grants****UNC Lineberger Comprehensive Cancer Center****National Coalition for Cancer Research**



Ways to GIVE

Ongoing Contributions

You can make an ongoing contribution weekly, monthly or annually in any amount. Gifts of any size are appreciated.

Tribute Gifts

A gift in memory or in honor of a loved one is a thoughtful way to express your appreciation and support. The V Foundation will send a special acknowledgement on your behalf.

Matching Gifts

Many companies encourage their employees to make charitable donations by matching their philanthropic support.

Gifts of Securities and Assets

Gifts of appreciated stock, mutual fund shares, real estate, paid-up life insurance or tangible personal property are innovative ways to give.

Remember The V Foundation in Your Will or Trust

After providing for your loved ones, bequests and trusts using cash, securities and property strengthen our research and provide financial stability.

Endowment Gifts

Giving to our endowment fund multiplies our abilities to fund cancer research now and in the future. The fund's earnings enable us to pay all Foundation operating expenses.

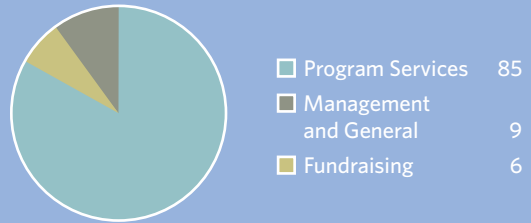
Please join us by supporting our programs. To donate now, call The V Foundation at 1-800-4JimmyV, or visit the "How to Donate" page at www.jimmyv.org.

"I urge all of you to enjoy your life, the precious moments you have. To spend each day with some laughter and some thought, to get your emotions going. To be enthusiastic every day and as Ralph Waldo Emerson said, 'Nothing great could be accomplished without enthusiasm.'"

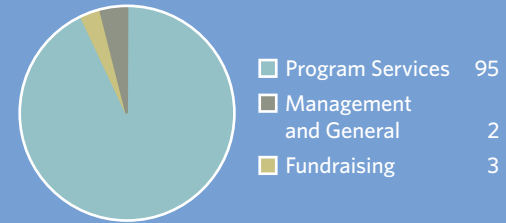
~ Jim Valvano

The V Foundation awards 100% of all new direct cash donations and net proceeds of events directly to cancer research and related programs.

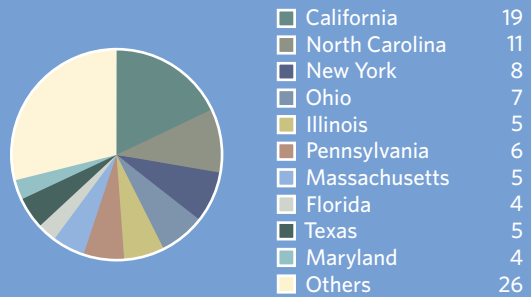
EXPENSE ALLOCATION SINCE INCEPTION, BY PERCENT (%)



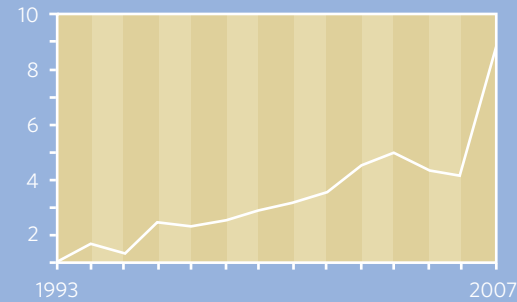
EXPENSE ALLOCATION 2007, BY PERCENT (%)



GRANT DISTRIBUTION BY STATE, BY PERCENT (%)



GRANTS AWARDED 1993-2007 (IN MILLION \$)



The V Foundation Financial Statements



STATEMENTS OF FINANCIAL POSITION

September 30, 2007 and 2006

| ASSETS | 2007 | 2006 | LIABILITIES AND NET ASSETS | 2007 | 2006 |
|---|---------------------|---------------------|---|---------------------|---------------------|
| Current assets | | | Current liabilities | | |
| Cash and cash equivalents | \$7,744,475 | \$6,143,485 | Accounts payable and accrued expenses | \$854,482 | \$1,020,100 |
| Pledges receivable | 1,800,637 | 1,682,014 | Capital lease obligations | — | 4,848 |
| Accounts receivable | 1,545,855 | 180,000 | Grants payable | 5,900,000 | 4,650,000 |
| Inventory | 1,954 | 8,290 | Total current liabilities | <u>6,754,482</u> | <u>5,674,948</u> |
| Prepaid expenses | 23,655 | 12,102 | Long-term liabilities | | |
| Total current assets | <u>11,116,576</u> | <u>8,025,891</u> | Capital lease obligations | — | 1,212 |
| Property and equipment | | | Grants payable | 6,620,000 | 3,910,000 |
| Furniture and equipment | 73,187 | 95,725 | Total long-term liabilities | <u>6,620,000</u> | <u>3,911,212</u> |
| Accumulated depreciation | (54,855) | (72,094) | Net assets | | |
| Properties and equipment, net | <u>18,332</u> | <u>23,631</u> | Unrestricted net assets | 2,005,629 | (80,388) |
| Other assets | | | Temporarily restricted net assets | 259,250 | 880,160 |
| Pledge receivables, long-term | 2,240,303 | 2,512,997 | Permanently restricted net assets | 14,564,659 | 12,934,850 |
| Investments designated for long-term use | 16,828,051 | 12,757,382 | TOTAL NET ASSETS | <u>16,829,538</u> | <u>13,734,672</u> |
| Intangible assets-finite-lived, net of amortization | 758 | 931 | TOTAL LIABILITIES AND NET ASSETS | <u>\$30,204,020</u> | <u>\$23,320,832</u> |
| TOTAL OTHER ASSETS | <u>19,069,112</u> | <u>15,271,310</u> | | | |
| TOTAL ASSETS | <u>\$30,204,020</u> | <u>\$23,320,832</u> | | | |

STATEMENTS OF ACTIVITIES AND CHANGES IN NET ASSETS

For the Years Ended September 30, 2007 and 2006

| | UNRESTRICTED | TEMPORARILY RESTRICTED | PERMANENTLY RESTRICTED | TOTAL | 2006 |
|---|--------------------|------------------------|------------------------|---------------------|---------------------|
| Revenues, gains, other support | | | | | |
| Contributions | \$5,991,891 | \$334,250 | \$1,629,809 | \$7,955,950 | \$5,344,501 |
| Special events, net of expenses | 3,259,365 | — | — | 3,259,365 | 2,726,304 |
| Investment income, net of expenses | 434,829 | — | — | 434,829 | 330,228 |
| Net realized and unrealized gains on investments designed for long-term use | 1,870,427 | — | — | 1,870,427 | 851,447 |
| | <u>11,556,512</u> | <u>334,250</u> | <u>1,629,809</u> | <u>13,520,571</u> | <u>9,252,480</u> |
| Net assets released from restrictions satisfaction of program restrictions | 955,160 | (955,160) | — | — | — |
| TOTAL REVENUES, GAINS, OTHER SUPPORT | <u>12,511,672</u> | <u>(620,910)</u> | <u>1,629,809</u> | <u>13,520,571</u> | <u>9,252,480</u> |
| Expenses | | | | | |
| Program | 9,836,609 | — | — | 9,836,609 | 8,603,865 |
| Management and general | 253,105 | — | — | 253,105 | 298,577 |
| Fundraising | 335,991 | — | — | 335,991 | 387,938 |
| TOTAL EXPENSES | <u>10,425,705</u> | <u>—</u> | <u>—</u> | <u>10,425,705</u> | <u>9,290,380</u> |
| Changes in net assets | 2,085,967 | (620,910) | 1,629,809 | 3,094,866 | (37,900) |
| Net assets, beginning of the year, as previously reported | (80,338) | 880,160 | 12,934,850 | 13,734,672 | 13,672,572 |
| Net assets, prior period adjustment | — | — | — | — | 100,000 |
| Net assets, beginning of year, as restated | (80,338) | 880,160 | 12,934,850 | 13,734,672 | 13,772,572 |
| NET ASSETS, END OF YEAR | <u>\$2,005,629</u> | <u>\$259,250</u> | <u>\$14,564,659</u> | <u>\$16,829,538</u> | <u>\$13,734,672</u> |